

Installation Guide

Version: 1.4.3
November 2010



Table of Contents

Table of Contents	2
Installing the Oracle Data Access Provider.....	3
Getting Oracle Data Provider for .NET 2.0	3
Preparing to Install	4
Installing Oracle Data Provider for .NET 2.0.....	4
Installing myObjectiveOLAP	6
Microsoft .Net Runtime Environment.....	7
Select Installation Folder	7
Confirm Installation	8
Installing.....	8
Installation Complete.....	9
Getting Started	10
myObjectiveOLAP menu	10
Connection Editor.....	10
Disconnecting.....	12
Attaching an Analytic Workspace	13
Legal Notices	15



Installing the Oracle Data Access Provider

myObjectiveOLAP links to the Oracle Data Provider for .NET 2.0 libraries available from Oracle.

The Oracle Data Provider for .NET 2.0 offers high performance and efficient access to Oracle data sources

Getting Oracle Data Provider for .NET 2.0

To get the latest version of the Oracle Data Provider for .NET 2.0 you can Google:

 ***“oracle odac 11g xcopy download”***

Alternatively, version 11.2.0.1.2 can be downloaded from this url:

<http://www.oracle.com/technetwork/database/windows/downloads/index-101290.html>

File name: ODAC112012Xcopy.zip



Preparing to Install

Unzip ODAC112012Xcopy.zip into a temporary directory on the computer you wish to install ODAC and myObjectiveOLAP on, for example:

C:\ODAC112012Xcopy

Installing Oracle Data Provider for .NET 2.0

Install the Oracle Data Provider for .NET 2.0 to a directory on your PC. In this example we will install ODAC to c:\oracleOdac

We will install Oracle Data Provider for .NET 2.0 so that we can see any information returned from the install.bat program

Windows → Start [Menu Button] → Run → cmd.exe

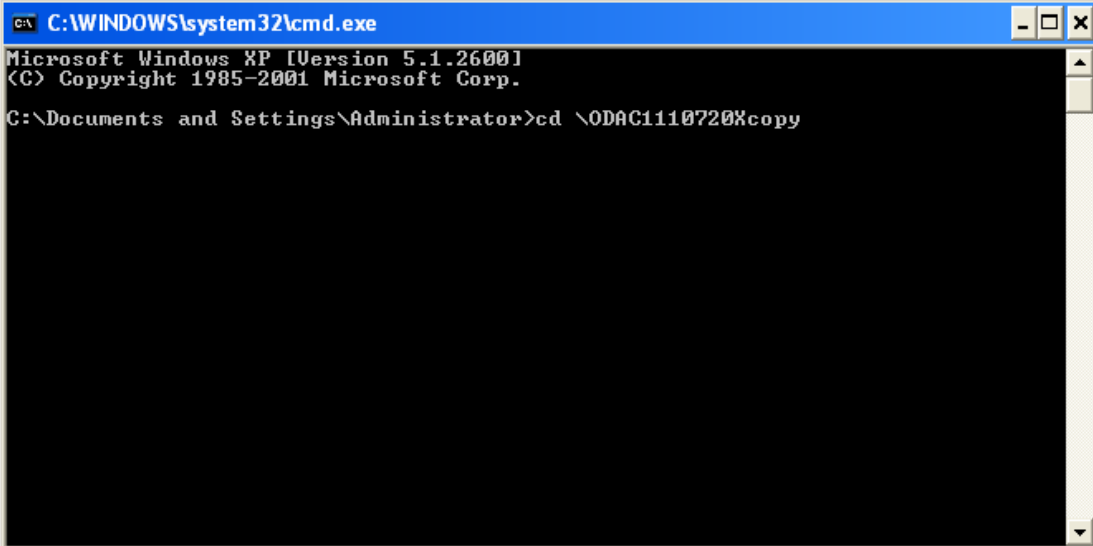
Press [OK]

Change the directory to your temporary directory

```
cd \ODAC112012Xcopy
```

[where ODAC112012Xcopy is your temporary staging directory]

Press [Enter key]



```
C:\WINDOWS\system32\cmd.exe
Microsoft Windows XP [Version 5.1.2600]
(C) Copyright 1985-2001 Microsoft Corp.
C:\Documents and Settings\Administrator>cd \ODAC110720Xcopy
```

Enter the following command, changing the location of your temporary directory and where you wish to install Oracle Data Provider for .NET 2.0 as appropriate.

```
install.bat odp.net20 c:\oracleOdac odac
```



Command	Explanation
Install.bat	This is the install executable made available by Oracle
odp.net20	This is the ODAC component we want to install
C:\oracleOdac	This is the directory we want to install ODAC into.
Odac	This is the Oracle_Home name we are giving our install

Press [Enter]

```

C:\WINDOWS\system32\cmd.exe
C:\Documents and Settings\Administrator>cd \ODAC110720Xcopy
C:\ODAC110720Xcopy>dir
Volume in drive C has no label.
Volume Serial Number is 1807-5C4A

Directory of C:\ODAC110720Xcopy

04/05/2010  18:49    <DIR>          .
04/05/2010  18:49    <DIR>          ..
04/05/2010  18:49    <DIR>          asp.net
11/09/2009  06:26             17,295  configure.bat
21/08/2009  12:49             9,471  install.bat
04/05/2010  18:49    <DIR>          instantclient_11_1
04/05/2010  18:49    <DIR>          odp.net20
04/05/2010  18:49    <DIR>          oledb
04/05/2010  18:49    <DIR>          oo4o
04/05/2010  18:49    <DIR>          orants
21/08/2009  12:56             6,534  readme.txt
10/09/2009  15:37             9,388  unconfigure.bat
11/09/2009  09:54            12,405  uninstall.bat
           5 File(s)              55,093 bytes
           8 Dir(s)  19,402,731,520 bytes free

C:\ODAC110720Xcopy>install.bat install.bat odp.net20 c:\oracleOdac odac

```

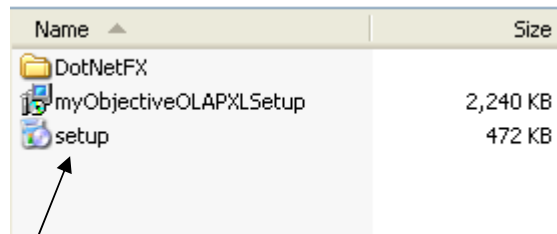
When the command line returns Oracle Data Provider for .NET 2.0 will have been installed.



Installing myObjectiveOLAP

Once you have installed the Oracle Data Provider you can install myObjectiveOLAP.

Unzip the myObjectiveOLAP installation zip file to a temporary directory



Name	Size
DotNetFX	
myObjectiveOLAPXLSetup	2,240 KB
setup	472 KB

Double-click the Setup executable.

Press [Next]



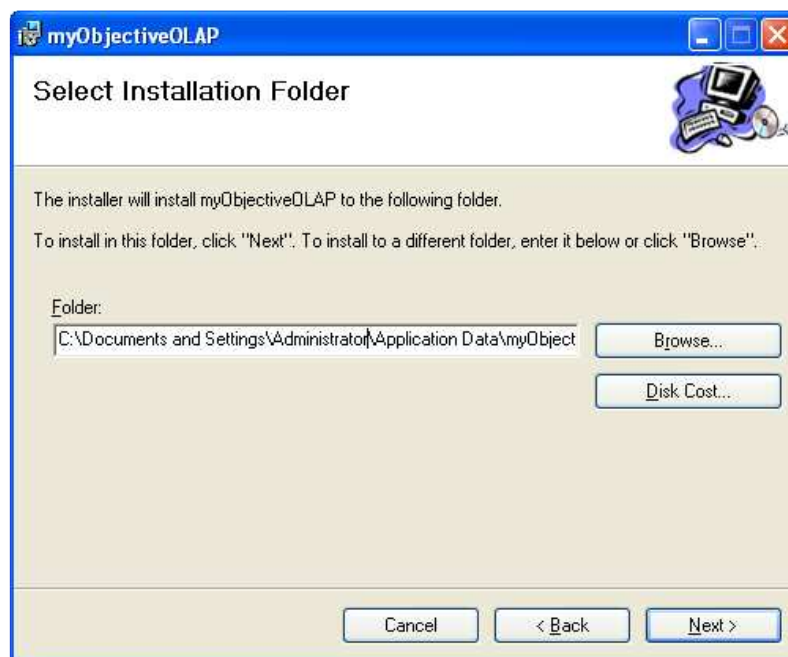
Microsoft .Net Runtime Environment

If your computer does not have the Microsoft .Net Runtime environment installed then the myObjectiveOLAP Installer will ask you to install it and start the bundled Microsoft .Net Installation package.

You must install the .Net Runtime environment in order to run myObjectiveOLAP. If you wish to acquire and install the .Net Runtime environment yourself then [Cancel] the myObjectiveOLAP install at this point

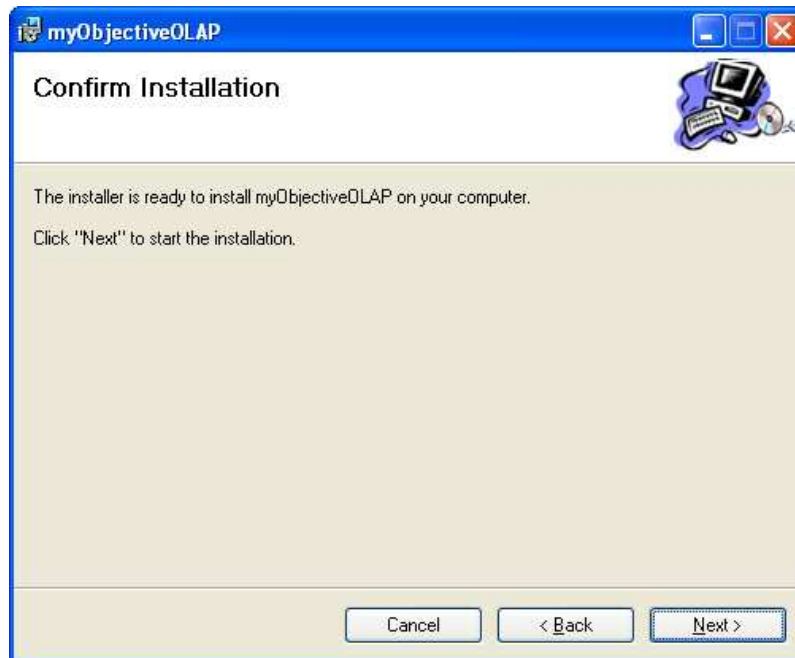
Select Installation Folder

Choose or select the default directory location you want to install myObjectiveOLAP into.



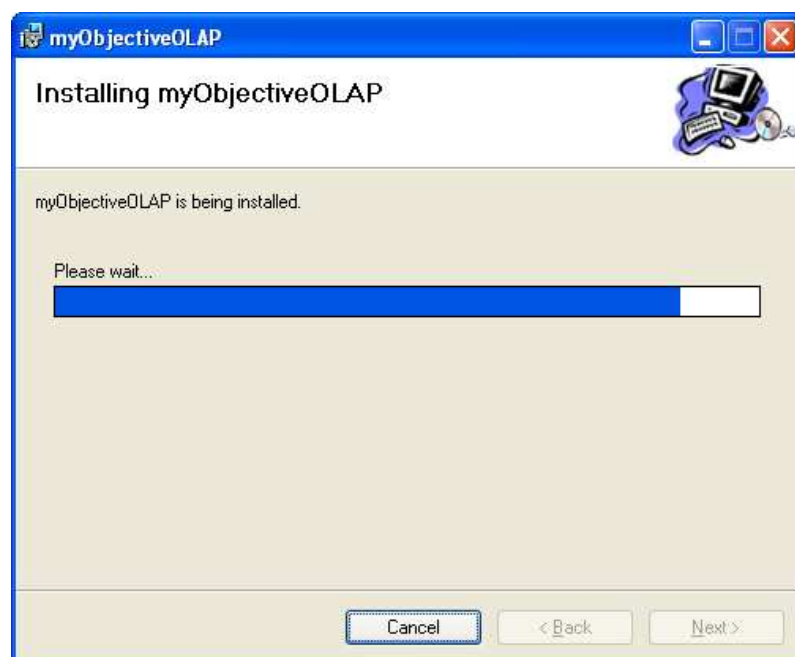
Confirm Installation

If you are happy with your choices press [Next] to confirm that you want to proceed with the installation of myObjectiveOLAP.



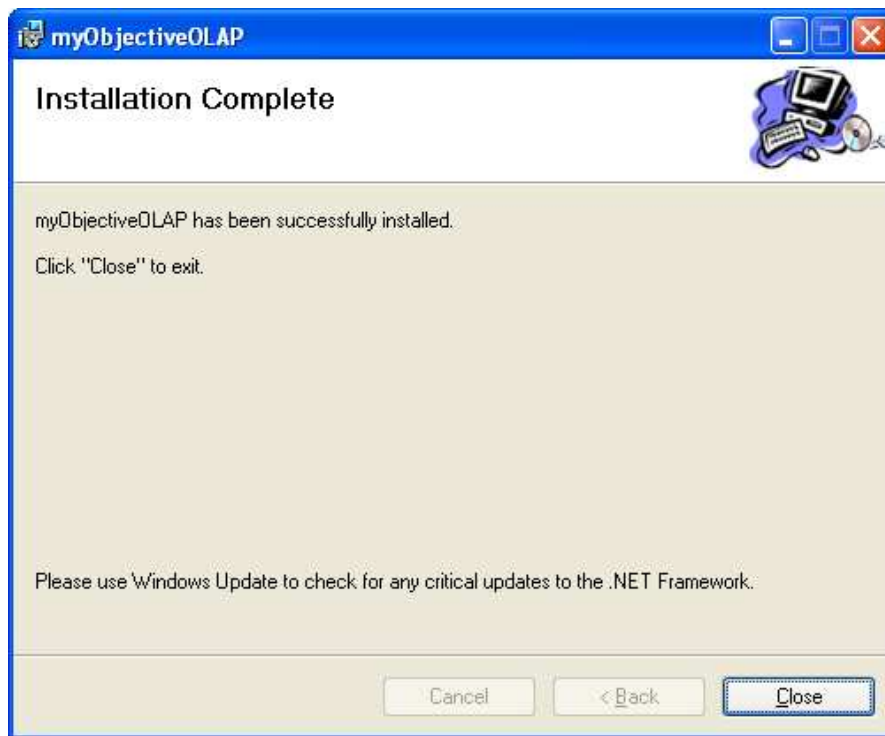
Installing

myObjectiveOLAP will now be installed.



Installation Complete

myObjectiveOLAP will now be installed. Press [Close]

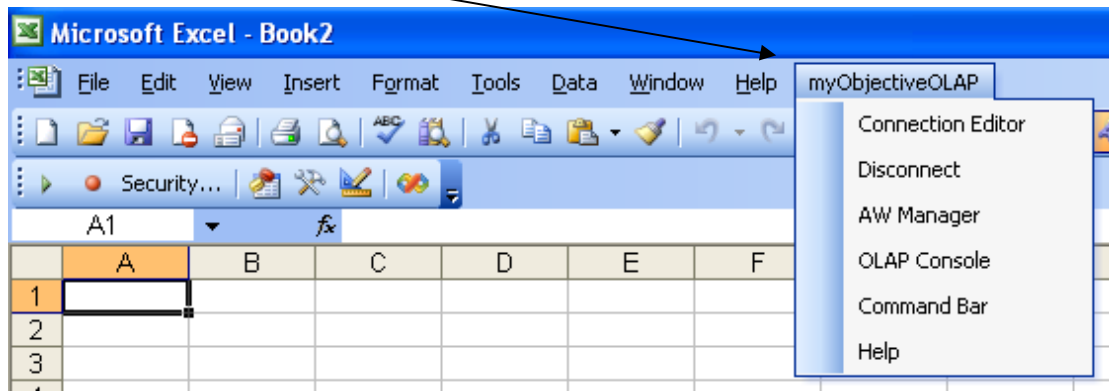


Getting Started

Start Microsoft Excel

myObjectiveOLAP menu

The myObjectiveOLAP menu item will have been added to your Microsoft Excel menu bar.

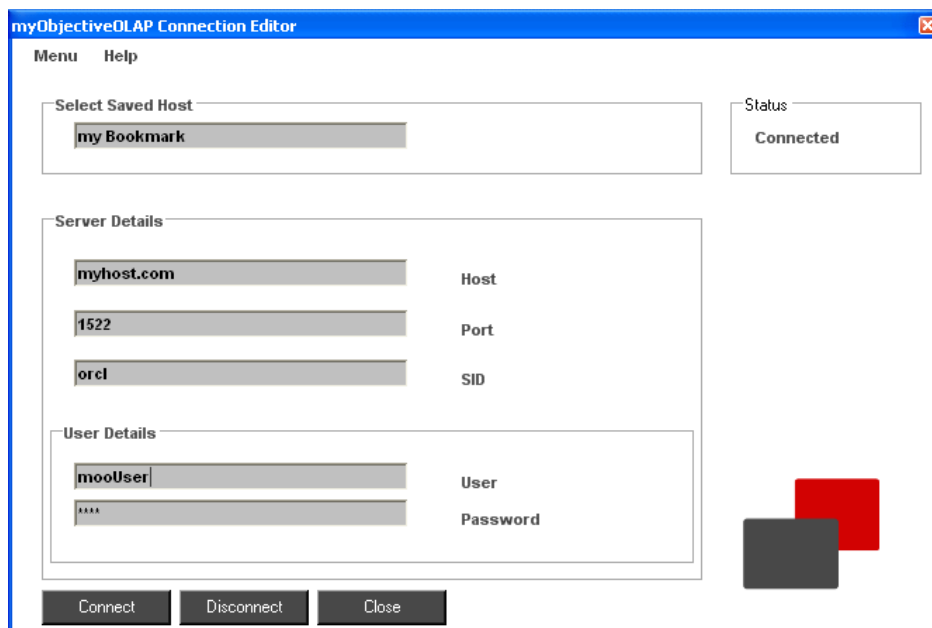


Connection Editor

myObjectiveOLAP for Microsoft Excel contains its own Connection Editor that is incorporated into the myObjectiveOLAP Excel Menu bar.

The myObjectiveOLAP Connection Details provides the end user with the ability to enter information relating to connecting to their Oracle OLAP installation.

After a new install you will need to create a new connection file. The easiest way of doing this is through the Connection Editor.



Enter the information relevant to your architecture:

Field	Explanation
Select Saved Host	Bookmark name for your connection
Host	The Hostname for your Oracle server
Port	The port number for your Oracle Database. i.e. 1521
SID	The Service ID for your Oracle Database i.e. orcl
User	Your Oracle database username
Password	Your Oracle database password

Save your connection information for future use:

Menu → Save

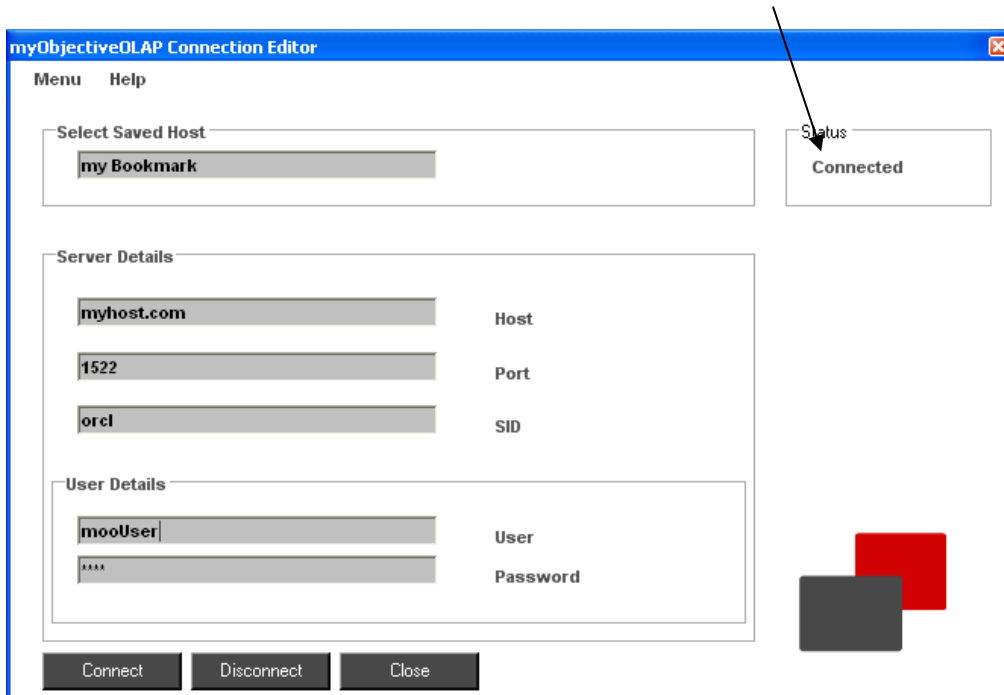
This will create a file called [settings.xml] which will hold all of your information. The password will be stored encrypted.

The file will be stored at a location similar to below:

C:\Documents and Settings\\$yourUserName\$\Local Settings\Application Data\Microsoft Corporation\Microsoft Office 2003\11.0.8169

Once you have entered your details you can connect by pressing the [Connect] button.

A successful connection will be displayed in the status frame

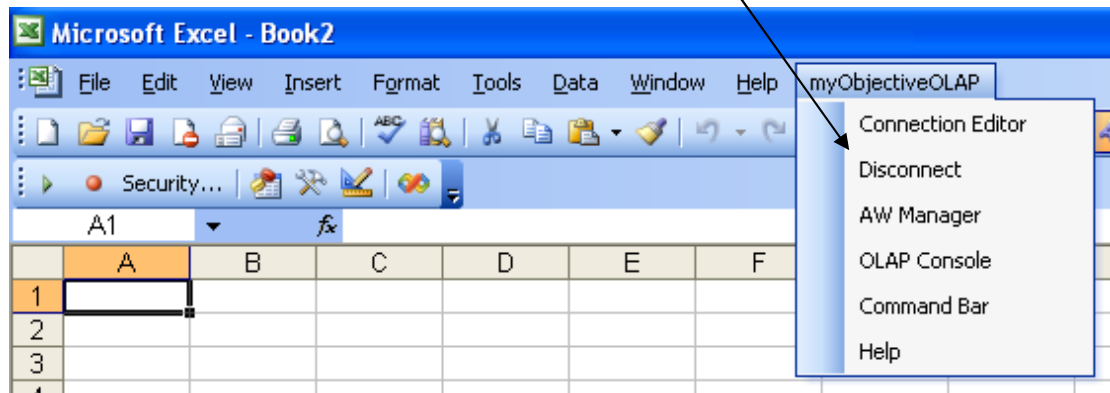


Once Connected Press [Close]



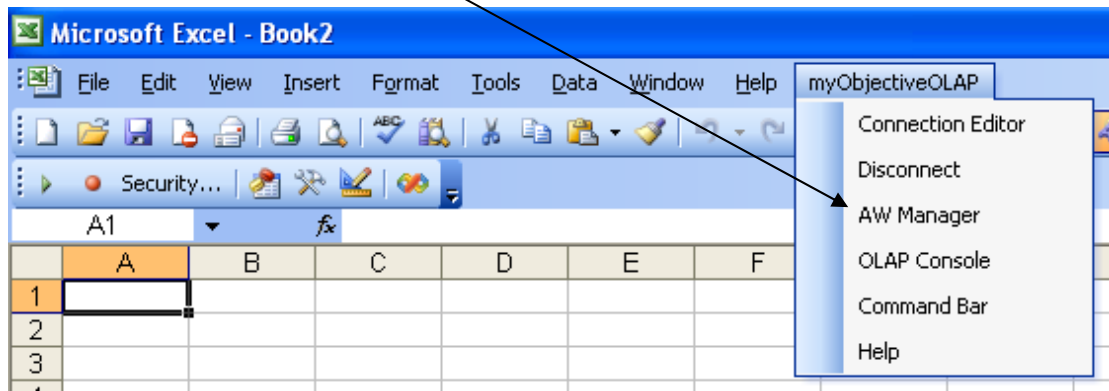
Disconnecting

You can disconnect at any time by pressing the [Disconnect] menu item

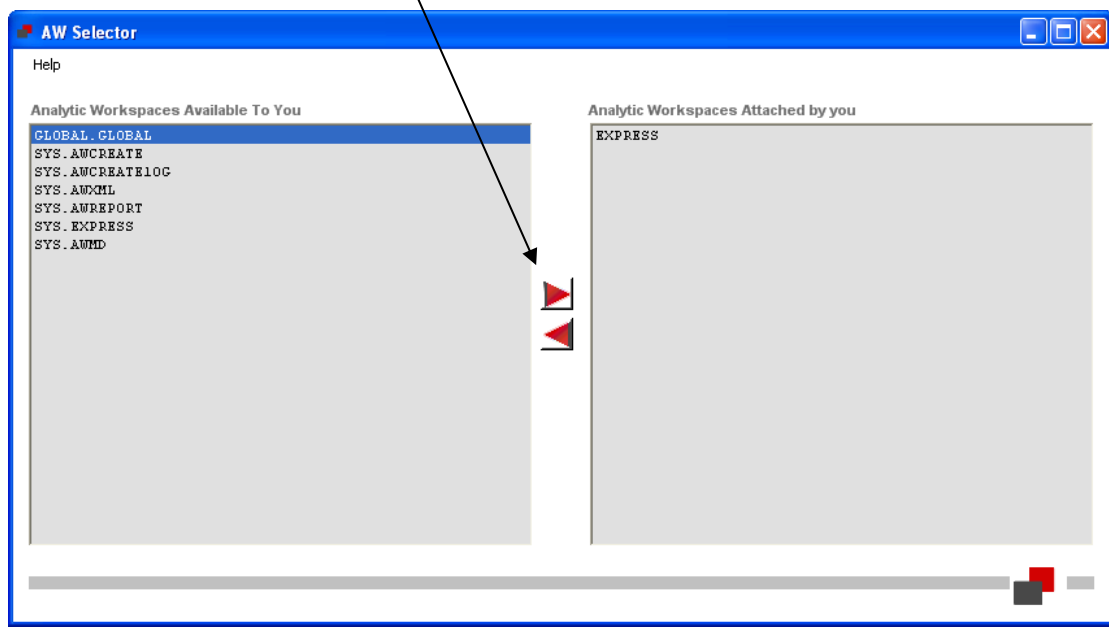


Attaching an Analytic Workspace

Use the AW Manager menu item to display the AW Manager



Double-click or use the arrows to attach the Analytic Workspace you wish to work with.



You can control the attach-order by reattaching an already attached analytic workspace.

Detach an analytic workspace by double-clicking on an attached analytic workspace.

If you have attached an analytic workspace via the OLAP Console in read-write mode the AW Manager will access you to confirm detaching the analytic workspace before detaching. You will also get the opportunity to [update] any changes in the analytic workspace.



Running the myObjectiveOLAP Samples

Download the latest version of the myObjectiveOLAP samples [myObjectiveOLAP_Examples-YYYY-MM-DD.xls](#) from:

<http://www.myobjectiveolap.com/documents.htm>

You must have a copy of the Oracle Demo Analytic Workspace Global installed in order to run the reporting samples.

This is available from the following Oracle url:

10G R2 Version:

http://download.oracle.com/otn/java/olap/Global_Schema_10203.zip

11G R1 Version:

http://www.oracle.com/technology/products/bi/olap/doc_sample_schemas/global_11g_schema.zip

Open the myObjectiveOLAP_Examples workbook in Excel.

Connect to your Oracle OLAP instance.

Attach the Global analytic workspace.

Follow the instructions in the myObjectiveOLAP_Examples workbook.



Legal Notices

Use of the myObjectiveOLAP software is dependant on acceptance of the myObjectiveOLAP End User Agreement. The header of this agreement is replicated below. The complete EULA is available at:

<http://www.myobjectiveolap.com/files/documents/mooEULA.pdf>

END-USER LICENSE AGREEMENT FOR myObjectiveOLAP IMPORTANT
PLEASE READ THE TERMS AND CONDITIONS OF THIS LICENSE AGREEMENT
CAREFULLY BEFORE CONTINUING WITH THIS PROGRAM INSTALL:

SDMC Consulting Limited End-User License Agreement ("EULA") is a legal agreement between you (either an individual or a single entity) and SDMC Consulting Limited. for the SDMC Consulting Limited software product(s) identified above which may include associated software components, media, printed materials, and "online" or electronic documentation ("SOFTWARE PRODUCT"). By installing, copying, or otherwise using the SOFTWARE PRODUCT, you agree to be bound by the terms of this EULA. This license agreement represents the entire agreement concerning the program between you and SDMC Consulting Limited, (referred to as "licenser"), and it supersedes any prior proposal, representation, or understanding between the parties.

If you do not agree to the terms of this EULA, do not install or use the SOFTWARE PRODUCT.

The SOFTWARE PRODUCT is protected by copyright laws and international copyright treaties, as well as other intellectual property laws and treaties. The SOFTWARE PRODUCT is licensed, not sold.

Microsoft®, WINDOWS®, Microsoft Excel®, Microsoft Office® are registered trademarks of Microsoft Corporation.

ORACLE® is a registered trademark of ORACLE Corporation.

Other names may be trademarks of their respective owners.

